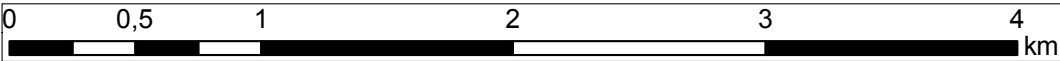


**Legend**

- Section No. 1
- Section No. 2
- Section No. 3
- Potential flood risk areas



**Appendix 7: Map with location of the Contract in reference to areas of potential flood hazard**  
(The map does not present the remaining embankments of the Vistula River, for which sections 1, 2 and 3 – being the subject of the study – form a completion of the Cracow's flood protection system)

**INDEX OF SHEETS**

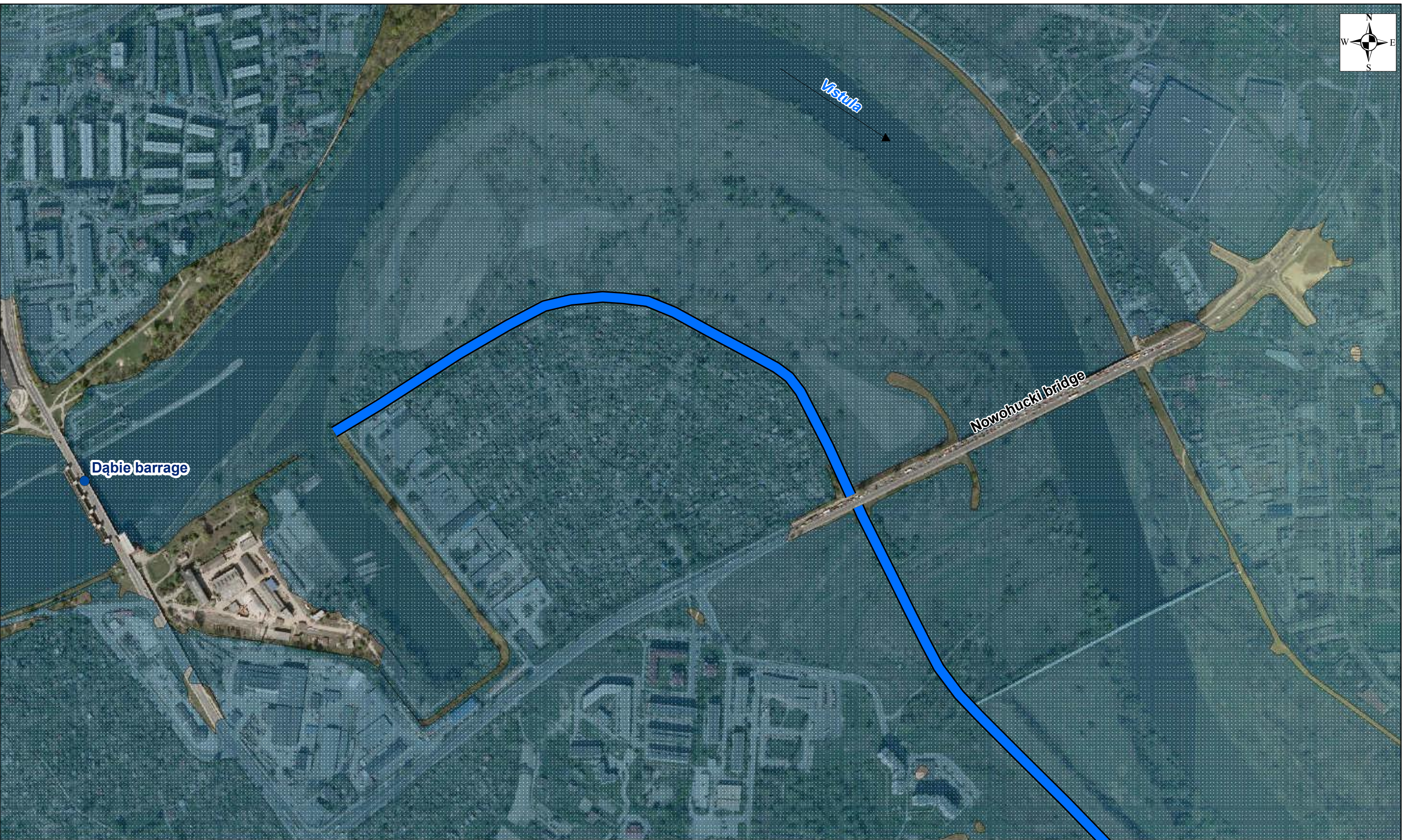
**Contract 3A.1 Modernization of Vistula embankments in Cracow**  
**Works Contract 3A.1/1**

- Section 1** - The left embankment of the Vistula river from Wanda bridge to the Przewóz barrage, including the backwater embankment of the Dłubnia river - Sheet 4, 5, 6
- Section 2** - The left embankment of the Vistula river from Przewóz barrage to Suchy Jar - Sheet 7, 8

**Works Contract 3A.1/2**

- Section 3** - The right embankment of the Vistula river from Dabie to the Przewóz barrage - Sheet 1, 2, 3, 4, 6, 7





**Legend**

- Section No. 1
- Section No. 2
- Section No. 3
- Potential flood risk areas

00,250,51

km

Appendix 7: Map with location of the Contract in reference to areas of potential flood hazard

(The map does not present the remaining embankments of the Vistula River, for which sections 1, 2 and 3 – being the subject of the study – form a completion of the Cracow's flood protection system)

SHEET 1

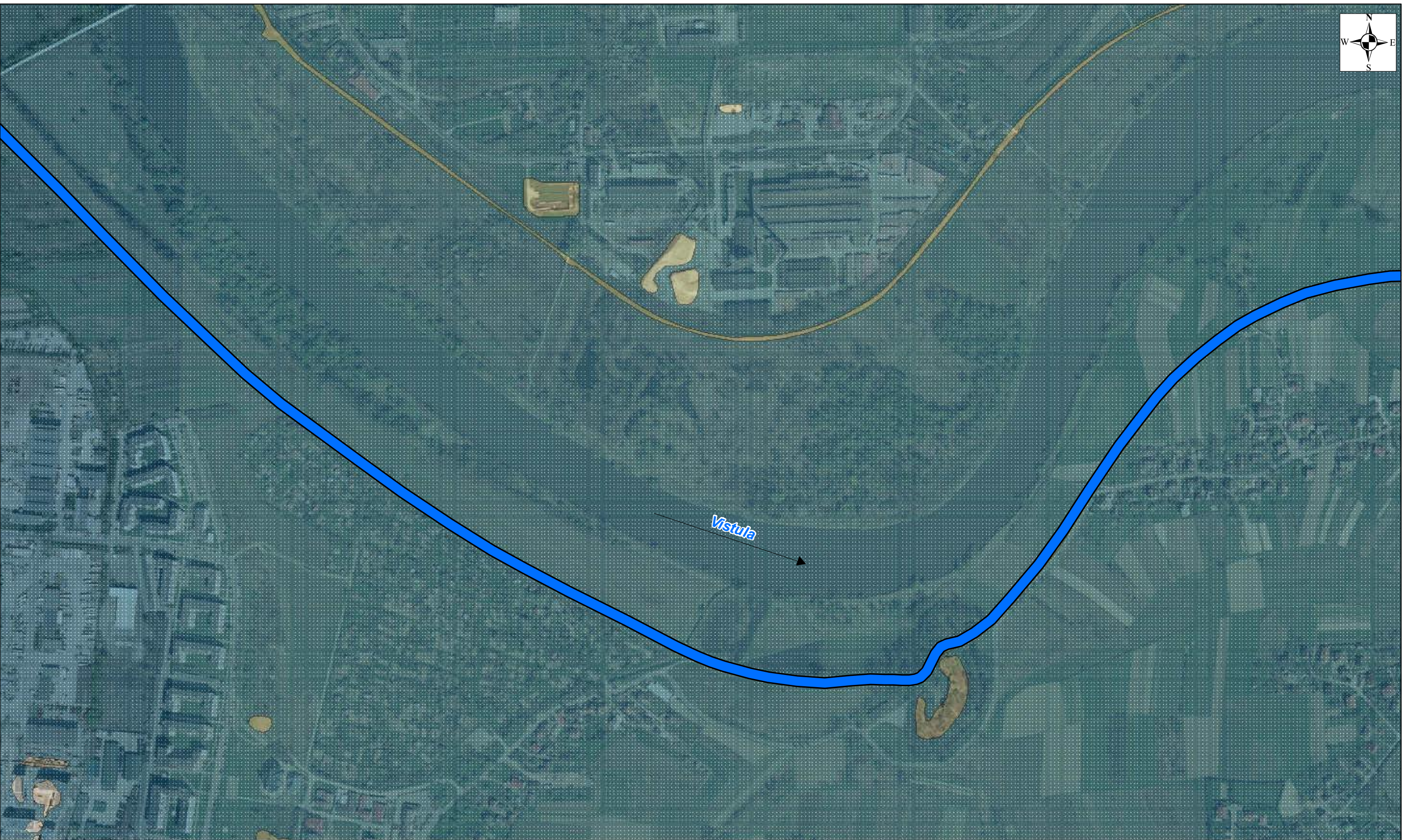
- Contract 3A.1 Modernization of Vistula embankments in Cracow**

**Works Contract 3A.1/1**

  - Section 1** - The left embankment of the Vistula river from Wanda bridge to the Przewóz barrage, including the backwater embankment of the Dłubnia river - Sheet 4, 5, 6
  - Section 2** - The left embankment of the Vistula river from Przewóz barrage to Suchy Jar - Sheet 7, 8
- Works Contract 3A.1/2**

  - Section 3** - The right embankment of the Vistula river from Dąbie to the Przewóz barrage - Sheet 1, 2, 3, 4, 6, 7





**Legend**

Section No. 1

Section No. 2

Section No. 3

Potential flood risk areas

0

0,25

0,5

1

km

**Appendix 7: Map with location of the Contract in reference to areas of potential flood hazard**  
(The map does not present the remaining embankments of the Vistula River, for which sections 1, 2 and 3 – being the subject of the study – form a completion of the Cracow's flood protection system)

**SHEET 2**

**Contract 3A.1 Modernization of Vistula embankments in Cracow**  
**Works Contract 3A.1/1**

**Section 1**

- The left embankment of the Vistula river from Wanda bridge to the Przewóz barrage, including the backwater embankment of the Dłubnia river - Sheet 4, 5, 6

**Section 2**

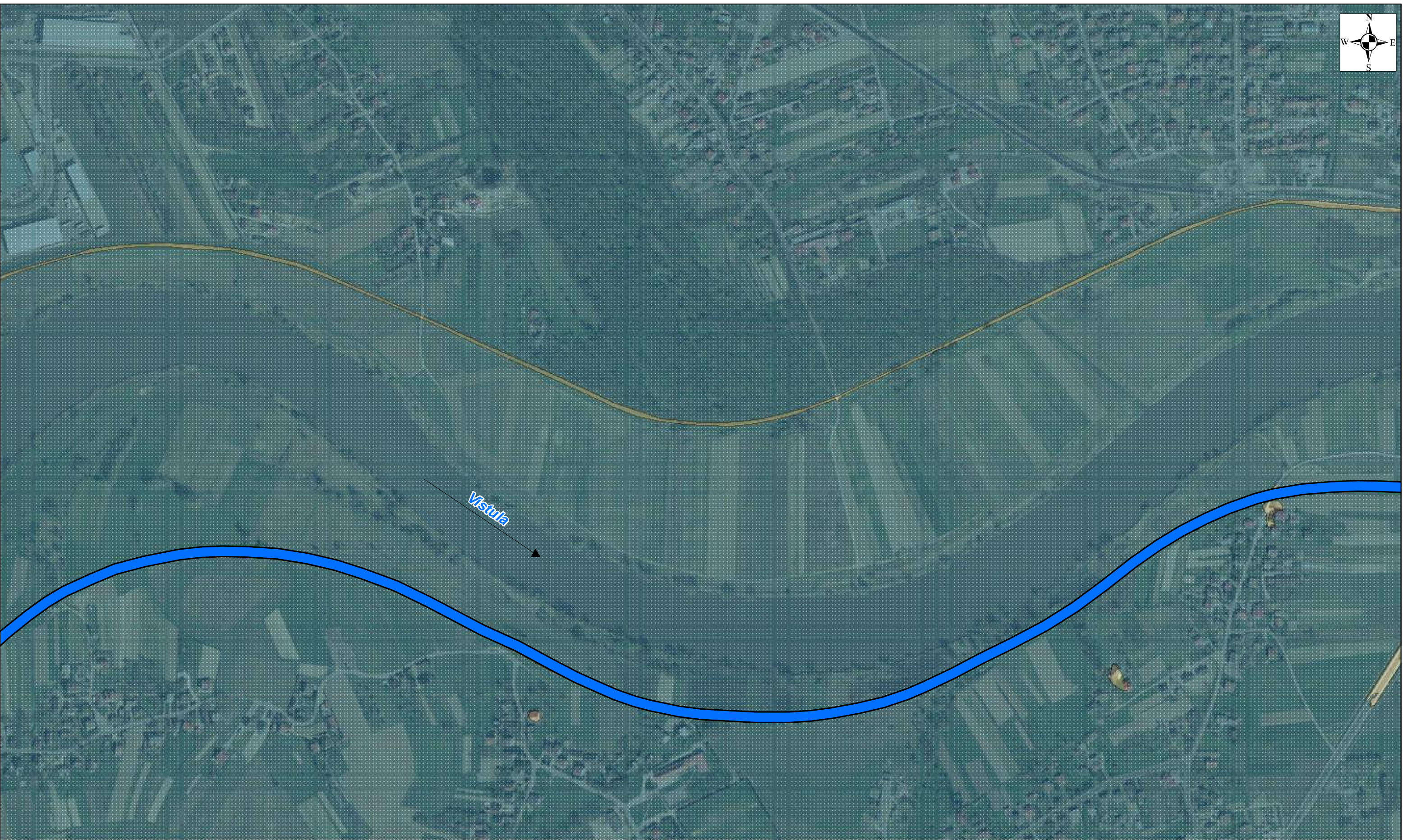
- The left embankment of the Vistula river from Przewóz barrage to Suchy Jar - Sheet 7, 8

**Works Contract 3A.1/2**

**Section 3**

- The right embankment of the Vistula river from Dabie to the Przewóz barrage - Sheet 1, 2, 3, 4, 6, 7





Legend

Section No. 1

Section No. 2

Section No. 3

Potential flood risk areas

0

0,25

0,5

1

km

Appendix 7: Map with location of the Contract in reference to areas of potential flood hazard

(The map does not present the remaining embankments of the Vistula River, for which sections 1, 2 and 3 – being the subject of the study – form a completion of the Cracow's flood protection system)

SHEET 3

Contract 3A.1 Modernization of Vistula embankments in Cracow

Works Contract 3A.1/1

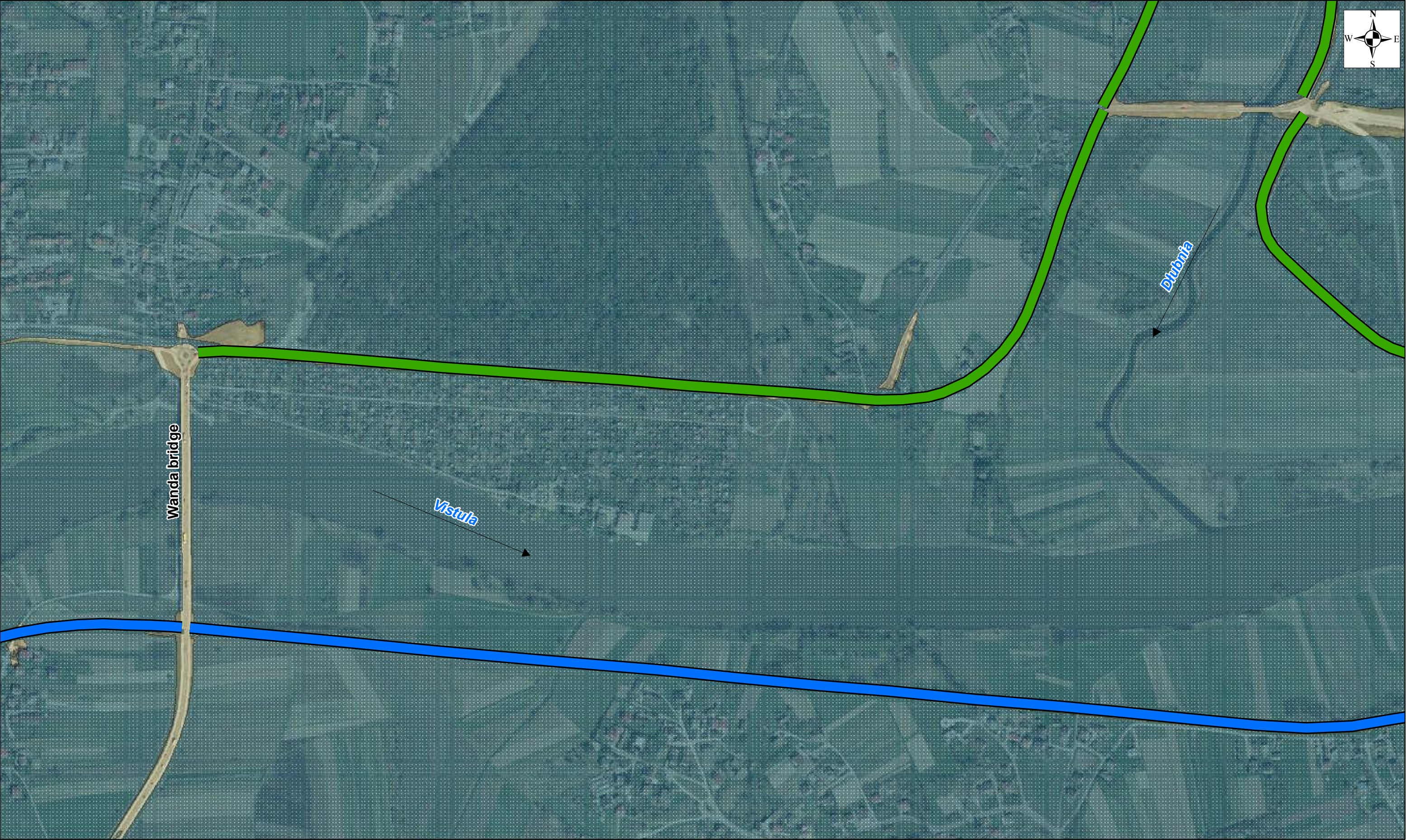
Section 1 - The left embankment of the Vistula river from Wanda bridge to the Przewóz barrage, including the backwater embankment of the Dłubnia river - Sheet 4, 5, 6

Section 2 - The left embankment of the Vistula river from Przewóz barrage to Suchy Jar - Sheet 7, 8

Works Contract 3A.1/2

Section 3 - The right embankment of the Vistula river from Dabie to the Przewóz barrage - Sheet 1, 2, 3, 4, 6, 7





Section No. 1

Section No. 2

Section No. 3

Potential flood risk areas

0

0,25

0,5

1

km

Appendix 7: Map with location of the Contract in reference to areas of potential flood hazard

(The map does not present the remaining embankments of the Vistula River, for which sections 1, 2 and 3 – being the subject of the study – form a completion of the Cracow's flood protection system)

SHEET 4

- Contract 3A.1 Modernization of Vistula embankments in Cracow

Works Contract 3A.1/1

Section 1 -

The left embankment of the Vistula river from Wanda bridge to the Przewóz barrage, including the backwater embankment of the Dłubnia river - Sheet 4, 5, 6

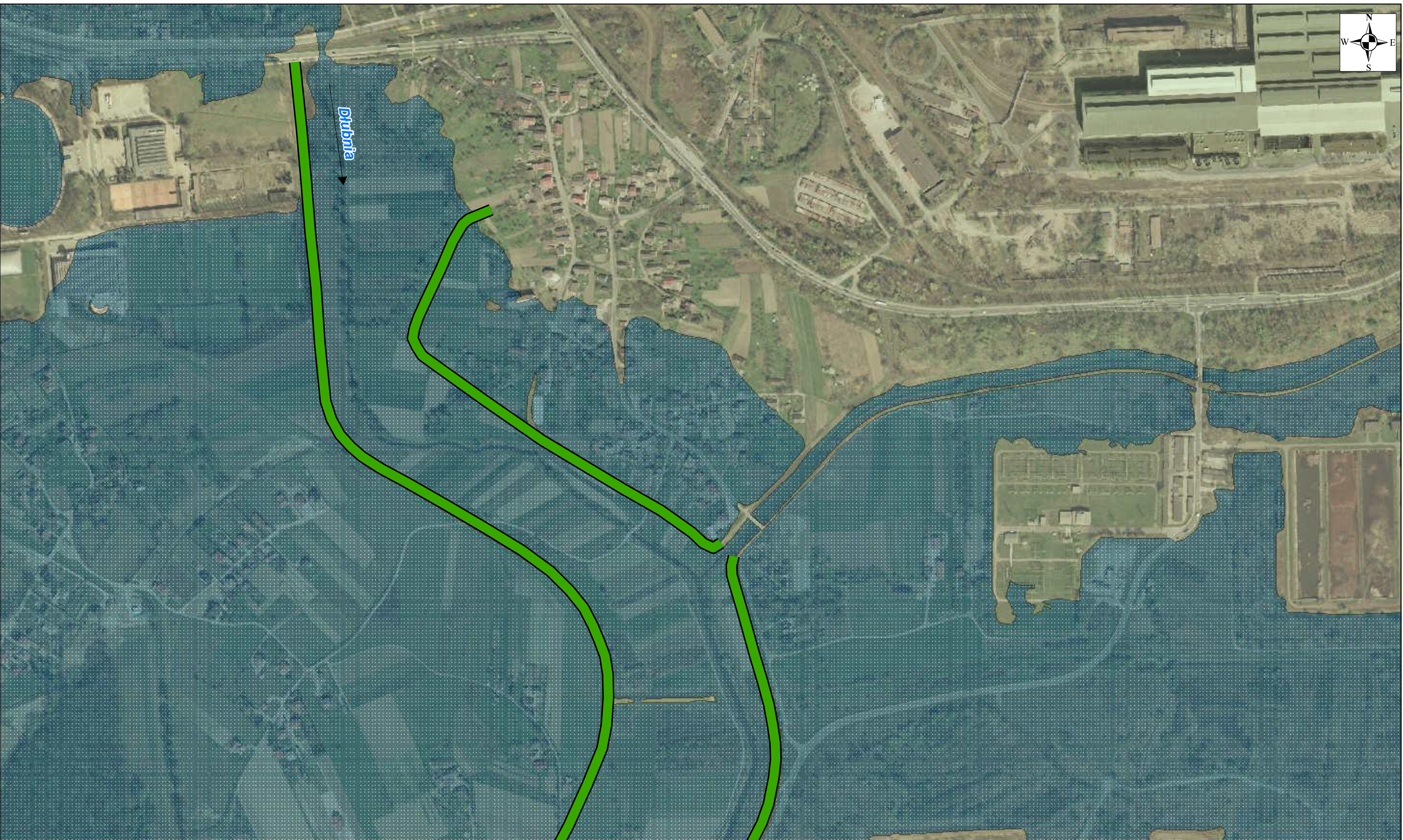
Section 2 -

The left embankment of the Vistula river from Przewóz barrage to Suchy Jar - Sheet 7, 8
- Works Contract 3A.1/2

Section 3 -

The right embankment of the Vistula river from Dabie to the Przewóz barrage - Sheet 1, 2, 3, 4, 6, 7





**Legend**

- Section No. 1
- Section No. 2
- Section No. 3
- Potential flood risk areas

00,250,51

km

**Appendix 7: Map with location of the Contract in reference to areas of potential flood hazard**  
(The map does not present the remaining embankments of the Vistula River, for which sections 1, 2 and 3 – being the subject of the study – form a completion of the Cracow's flood protection system)

**SHEET 5**

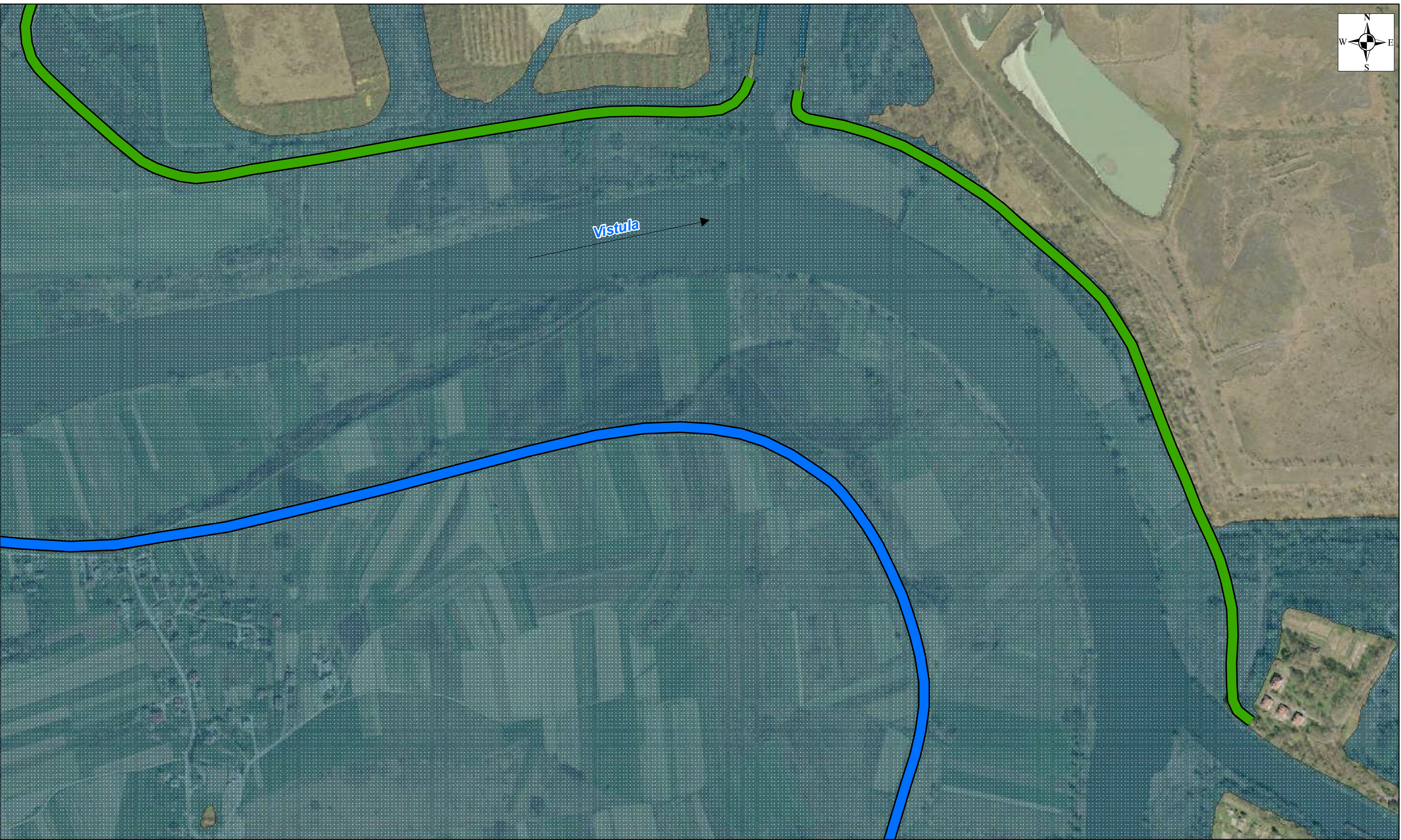
- Contract 3A.1 Modernization of Vistula embankments in Cracow**

**Works Contract 3A.1/1**

  - Section 1** - The left embankment of the Vistula river from Wanda bridge to the Przewóz barrage, including the backwater embankment of the Dłubnia river - Sheet 4, 5, 6
  - Section 2** - The left embankment of the Vistula river from Przewóz barrage to Suchy Jar - Sheet 7, 8
- Works Contract 3A.1/2**

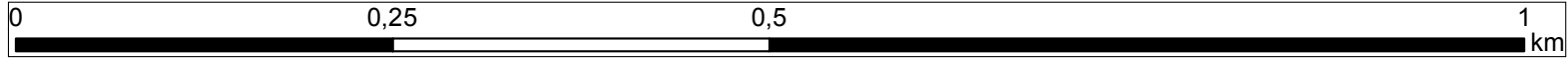
  - Section 3** - The right embankment of the Vistula river from Dabie to the Przewóz barrage - Sheet 1, 2, 3, 4, 6, 7





## Legend

- Section No. 1
- Section No. 2
- Section No. 3
- Potential flood risk areas



## Appendix 7: Map with location of the Contract in reference to areas of potential flood hazard

(The map does not present the remaining embankments of the Vistula River, for which sections 1, 2 and 3 – being the subject of the study – form a completion of the Cracow's flood protection system)

### SHEET 6

#### Contract 3A.1 Modernization of Vistula embankments in Cracow Works Contract 3A.1/1

- Section 1** - The left embankment of the Vistula river from Wanda bridge to the Przewóz barrage, including the backwater embankment of the Dłubnia river - Sheet 4, 5, 6
- Section 2** - The left embankment of the Vistula river from Przewóz barrage to Suchy Jar - Sheet 7, 8

#### Works Contract 3A.1/2

- Section 3** - The right embankment of the Vistula river from Dabie to the Przewóz barrage - Sheet 1, 2, 3, 4, 6, 7



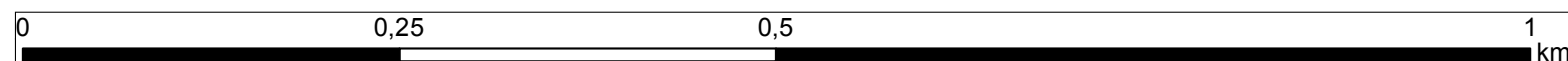


*Vistula*

Przewóz barrage

## Legend

- Section No. 1
- Section No. 2
- Section No. 3
- Potential flood risk areas



## Appendix 7: Map with location of the Contract in reference to areas of potential flood hazard

(The map does not present the remaining embankments of the Vistula River, for which sections 1, 2 and 3 – being the subject of the study – form a completion of the Cracow's flood protection system)

## SHEET 7

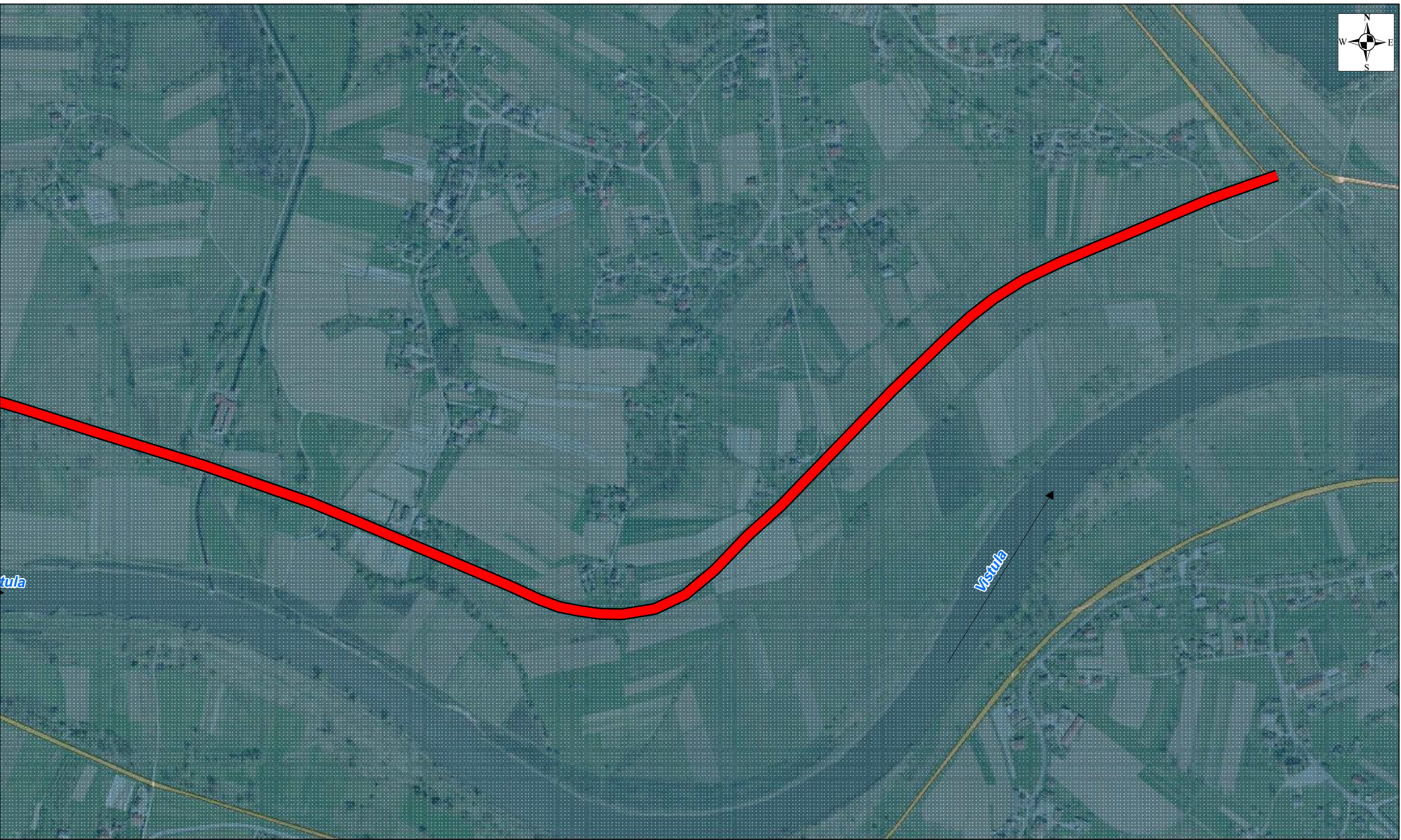
### Contract 3A.1 Modernization of Vistula embankments in Cracow Works Contract 3A.1/1

- Section 1** - The left embankment of the Vistula river from Wanda bridge to the Przewóz barrage, including the backwater embankment of the Dłubnia river - Sheet 4, 5, 6
- Section 2** - The left embankment of the Vistula river from Przewóz barrage to Suchy Jar - Sheet 7, 8

### Works Contract 3A.1/2

- Section 3** - The right embankment of the Vistula river from Dabie to the Przewóz barrage - Sheet 1, 2, 3, 4, 6, 7





Section No. 1

Section No. 2

Section No. 3

Potential flood risk areas

0

0,25

0,5

1

km

**Appendix 7: Map with location of the Contract in reference to areas of potential flood hazard**  
(The map does not present the remaining embankments of the Vistula River, for which sections 1, 2 and 3 – being the subject of the study – form a completion of the Cracow's flood protection system)

**SHEET 8**

- Contract 3A.1 Modernization of Vistula embankments in Cracow**  
**Works Contract 3A.1/1**
- Section 1** - The left embankment of the Vistula river from Wanda bridge to the Przewóz barrage, including the backwater embankment of the Dłubnia river - Sheet 4, 5, 6
  - Section 2** - The left embankment of the Vistula river from Przewóz barrage to Suchy Jar - Sheet 7, 8
- Works Contract 3A.1/2**
- Section 3** - The right embankment of the Vistula river from Dabie to the Przewóz barrage - Sheet 1, 2, 3, 4, 6, 7